

# Be first. Drive electric.

» smart EQ fortwo and forfour.



smart





# Contents

**04**

**smart**

Urban mobility reinvented.

**06**

**All electric**

A great idea for all models.

**08**

**A unique driving experience**

The only electric cabrio in the world.

**10**

**Uninterrupted driving enjoyment**

Fun at the wheel, right from the start.

**12**

**Excellent cruising range**

Energy for the whole city.

**14**

**Topping up energy levels**

Easy recharging at any time.

**16**

**A quick Q&A**

Electric mobility in everyday life.

**18**

**Contemporary interior**

smart through and through.

**22**

**Intelligent connectivity**

Digitally connected with the smart EQ control app.

**26**

**Innovative safety**

Well protected around town.

**30**

**New momentum**

An electric car for every type of personality.

**32**

**Fresh colours**

The colour of power.

**34**

**Special characters**

The passion, perfect, prime and BRABUS Style lines and the edition nightsky special model.

**46**

**Uniquely electric**

A smart like no other: smart BRABUS tailor made.

**48**

**Tyres & wheels**

Choosing the right wheels for your new drive system.

**50**

**Configurator**

Design your own electric car.

**52**

**Technical data**

All data at a glance.

In addition to charging at a wallbox, the electric smart vehicles equipped with the 22 kW on-board charger with fast-charging function (908)<sup>1</sup> can alternatively be charged at a domestic power socket. The charging time of the fast charger using a domestic power socket is longer than the standard solution, due to the lower efficiency. If you wish to charge your electric smart using a domestic power socket in an older building or near industrial installations, we recommend having your domestic power socket checked for suitability by a qualified electrician beforehand.

The blue charging cable shown in this catalogue is not available for the smart EQ fortwo and forfour models. All models are delivered with black charging cables. Some of the smart EQ fortwo and forfour models illustrated in this catalogue are nightsky edition special models.

»» **Be first.**

**Don't just look into the future.** Help to shape it! Be in the vanguard of the electric movement and lead your city into the new age of urban mobility. It's only by venturing to be a pioneer that you can discover something new – and sometimes even change the world. So don't wait for everyone else. Lead the way.



There's so much more to discover: many of the pages include QR codes that will guide you to films, detailed information or apps. Simply scan the codes with your tablet or smartphone to be taken automatically to the relevant content. (From iOS 11 on, a QR scanner is an integral part of the camera.)

<sup>1</sup>Only in conjunction with digital radio.



# » New energy for the city.



Share your car via smartphone, search online for a parking space and control important vehicle functions with a single app: the smart has always been more than an ultra-compact car with a small turning circle – it also embodies the aspiration to improve life in the city with courage, ideas and innovations. And this has never been more thoroughly thought-through than in the case of the new smart EQ fortwo and forfour. Join us as we discover a new, better and more intelligent form of urban mobility: **welcome to the electric world of smart.**

Find out more about the electric models in our product film:





# » Uncompromisingly electric.



**No half measures:** smart is the only manufacturer worldwide to offer its entire model range with petrol engines as well as in all-electric battery-powered versions: fortwo, forfour and fortwo cabrio. With all the advantages that make a smart unique, with state-of-the-art connected-car technologies and full access to our innovative, digital services – and of course with the exceptional driving enjoyment that only an electric car can offer.



**Conceived as an electric car right from the start.** The first generation of the smart, back in 1998, was a revolution – and designed even then with an electric drive system in mind. In 2007, London was the setting for the handover of 100 all-electric smart vehicles, the first of many thousands that have been meeting the challenges of everyday urban life in major cities around the world ever since.

Find out more on our e-mobility website:






## » E for exceptional: the cabrio.




**All electric cars are virtually silent.** And where better to appreciate that fact than in a convertible? While enjoying the drive with the top down, all you will hear from the motor is a quiet hum. This really makes the experience special. It is therefore all the more surprising that the global market for electric-powered convertibles is restricted to this one model: at 2.69 m in length, the smart EQ fortwo cabrio is the only all-electric convertible. So if you want a convertible without a combustion engine, look no further. You will have made a smart choice.




# » When acceleration becomes exhilaration.



**The smart models with combustion engine have long demonstrated that fun at the wheel has nothing to do with displacement.** After all, agility and manoeuvrability are far more important in town than a big engine. And just how much fun can be had driving a smart without any engine displacement at all is something that you really should discover for yourself. With full torque on tap from the very first turn of the motor, seamless acceleration and electric power steering, the electric cars from smart are exceptionally agile – and virtually silent as well. Driving through town has probably never been quite so much fun as this.



 **Extra energy:** whereas combustion engines deliver good performance within a certain speed range, an electric motor operates at a constant level of efficiency, while also generating a significantly higher engine speed. Its energy can therefore be transmitted directly, dispensing with the need for a manual transmission and making speed regulation continuously variable – and always with the full 160 Nm of torque.



# »» Small circles. Big range.

**Small turning circle, wide range of operation:** the new smart EQ fortwo and forfour are made for life in the city, in every respect. A range of up to 160 kilometres (fortwo) makes the new models ideally suited to the urban environment and is sufficient for those daily trips across town, without having to worry about the battery. So you can comfortably drive into town, through town, to work, to visit friends, to go shopping – and back. And as you do so, take advantage of an astonishingly small turning circle: thanks to its compact exterior dimensions, electric power steering and a wider turning angle than you find with front-engined cars, a smart can almost turn on the spot.



**Nothing wasted:** recuperation is the term given to the process of regenerating energy during coasting and braking. Radar-based recuperation<sup>1</sup> at smart, however, goes a step further: a radar sensor monitors the traffic in front of the vehicle and automatically selects the recuperation level that makes best use of the vehicle's kinetic energy.

**Take a digital everyday driving test with our smart experienc-e app:**



<sup>1</sup>Not available for standard-specification models.





»» From 10 to 80%  
in next to no time.



**Time for a recharge:** the optional 22 kW on-board charger<sup>1</sup> is your quick fix for fresh energy. At a charging station or wallbox you can charge your battery up from 10 to 80% in under 40 minutes.



**The power is flowing:** every month, more than 800 new charging stations are being installed worldwide – above all in metropolitan areas.

**Find charging stations near you:**



<sup>1</sup>Only in conjunction with digital radio.





# >> Three timely questions.



## The things everyone asks before they buy an electric car.

We are convinced that the future of urban mobility is electric. And if you're ready to make the changeover now, you're bound to have a few questions. We've answered the most important ones here.



**Is the range sufficient?** A range of up to 160 kilometres in the city ought to be more than enough. Just to reassure yourself, you can use the range simulator in our smart experienc-e app to run quickly through your daily trips and identify all the charging stations local to you.



**How long does charging take?** It depends how and where you do the charging. With the 4.6 kW on-board charger, charging takes under 3.5 hours at a wallbox<sup>1</sup> and under 6 hours at a standard power socket<sup>1,2</sup> (varies from country to country). The fastest way is with the optional 22 kW on-board charger<sup>3</sup> in conjunction with a wallbox or charging station – here the battery is recharged from 10 to 80% in under 40 minutes.

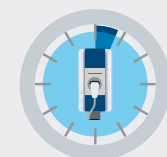


Find out all about the subject of charging:



### Where can I charge my car?

#### Option 1: wallbox.



With 22 kW on-board charger<sup>3</sup>: < 40 minutes<sup>1</sup>  
With 4.6 kW on-board charger: < 3.5 hours<sup>1</sup>

Powerful and weatherproof: the wallbox is your own private charging station. Installation requires little more than a private parking space such as a carport, garage or company car park, plus a nearby power source. At smart.com you can check whether your parking space meets the requirements.

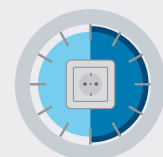
#### Option 2: public charging stations.



With 22 kW on-board charger<sup>3</sup>: < 40 minutes<sup>1</sup>  
With 4.6 kW on-board charger: < 3.5 hours<sup>1</sup>

Almost all charging stations support the Type 2 connector (EU standard) used by all electric models of smart. To find your nearest charging station, refer to the smart EQ control app or go to [plugsurfing.com](https://plugsurfing.com).

#### Option 3: power socket.



With 4.6 kW on-board charger: < 6 hours<sup>1,2</sup> (varies from country to country)

No charging station or wallbox nearby? A mode 2 charging cable allows you to plug your electric smart into most conventional domestic sockets.

The photograph in the centre of this page shows the Wallbox Home. Expected to be available from the end of 2018. <sup>1</sup>The stated times refer to charging from 10 to 80 percent. <sup>2</sup>The stated time refers to charging with a mode 2 charging cable and the 4.6 kW on-board charger. <sup>3</sup>Only in conjunction with digital radio.





# » Trendsetting in its design, too.

The interior not only looks good but also feels great to the touch, thanks to the high quality of the materials used. The fresh design, with recurring elements such as the dynamic loop or the honeycomb pattern, is a smart hallmark. And all the more special for that. Generously proportioned fabric-upholstered surfaces create an atmosphere to make you feel at home – and offer something a bit different to the staid monotony of many other cars. A great way to show that functionality can look good. A highlight, time and time again, for anyone taking a seat in a smart fortwo for the first time is just how surprisingly big and spacious a car with such compact exterior dimensions can be.



Explore all the equipment lines and appointment variants in our price list:







The look and feel of the materials are there to enjoy at every point in the journey. Many surfaces are generously covered with fabric and boast colour combinations that range from stylish to extra-vagant: the various equipment lines each have an individual character of their own.

- 1 **The dashboard instrument** shows the charge level of the battery and the available power, as well as whether the vehicle is using or recuperating energy.
- 2 **The instrument cluster** provides information about available range and the car's ECO score: this is a display that helps you to maintain a consistent and therefore efficient driving style. With the passion, perfect and prime equipment lines the instrument cluster takes the form of a colour 8.9 cm (3.5-inch) TFT display that also provides an array of other information: for example how much energy you are currently using or recuperating, or what settings you have chosen for the pre-entry climate control system.
- 3 **The optional smart Media-System** with 17.8 cm (7-inch) multi-touch display is intuitive to control and offers a wide range of possibilities. Important functions such as navigation or telephony can be operated via voice control, while USB and AUX connections and an SD card slot allow you to play music and view pictures and films. You can use Bluetooth® to make telephone calls without taking your hands away from the steering wheel, or to stream music. The Media-System can also be used to display data relevant to the vehicle.
- 4 **Forward, reverse, park, neutral:** a smart EQ fortwo or forfour is extremely easy to drive – one gear is all you need, whatever your speed. The ECO button activates ECO Mode and with it a range of energy-saving functions: maximum recuperation, reduced cooling/heating output, a reduced top speed and a flatter accelerator curve – all in the interest of extending the vehicle's range.



- 5 **The consumption details relating to energy flow** show you at one-minute intervals how much energy you are consuming or, alternatively, how much you have regenerated through recuperation.

**Fills up with more than just energy:** a smart takes up little space – but offers plenty of it inside. Loading it is easy, too, thanks to the split tailgate of the smart fortwo, for example. Or thanks also to the innovative readyspace seats of the smart forfour, which allow you to make room for large items in no time at all. A fun way of finding out just how much space you have is provided by our pactris app.



Load up your smart with pactris:





# »» More smart in your phone.

## All aboard for an intelligent link-up with the smart EQ control app.

Your car is now more mobile than ever: as the driver of a smart EQ fortwo or forfour, you have all important vehicle-related information and functions to hand at any time on your smartphone. All you need is the smart EQ control app.



### Simple registration and use.

Once you've registered, you can use all of the functions. Use is intuitive and via a personalised user interface customised completely to your needs.



### Retrieval of vehicle status.

Charge level of the high-voltage battery, current range or the efficiency of your driving style: all key information is available to you any time, anywhere.

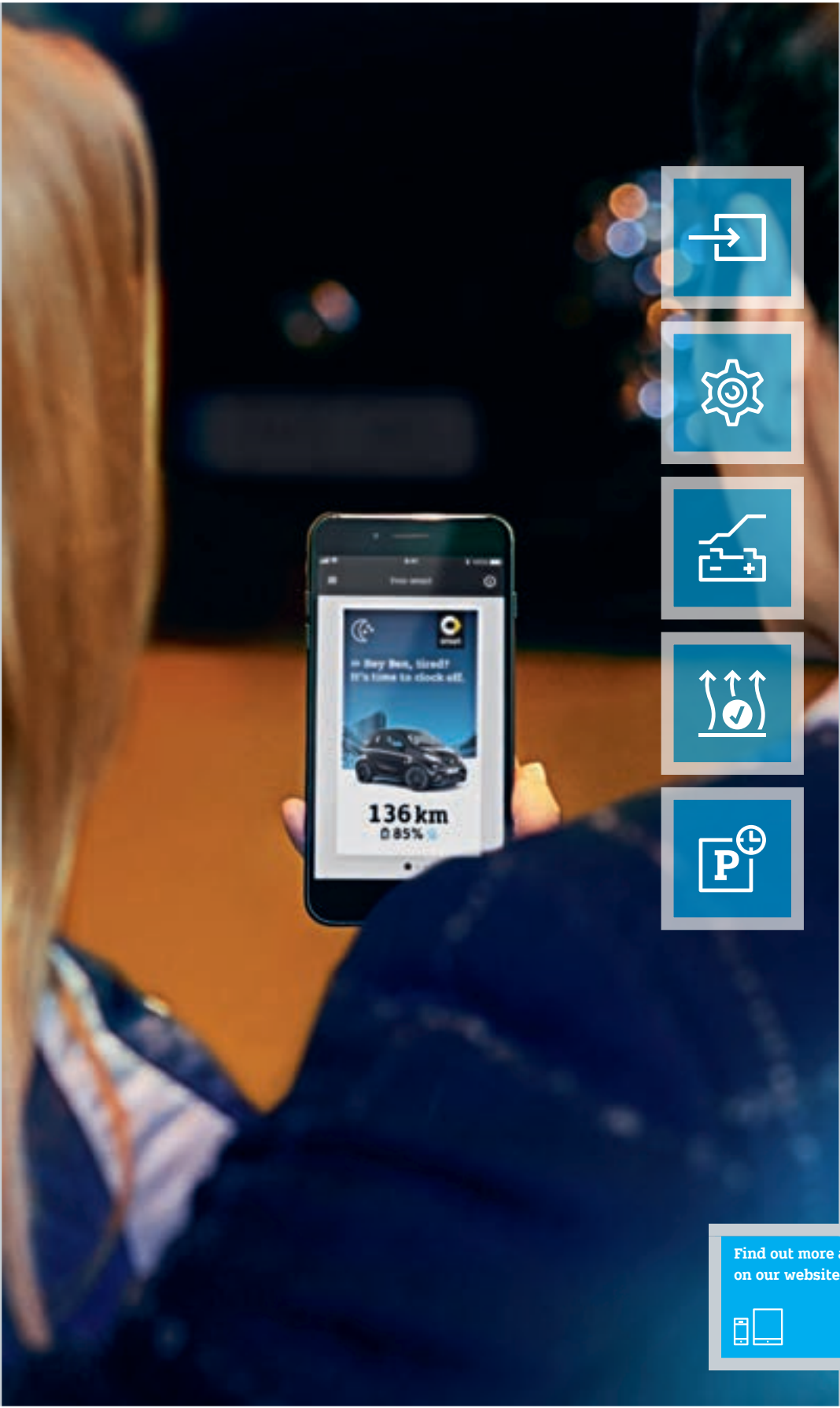


### Monitoring and controlling the charging process.

From remaining charge time to charging capacity: with the smart EQ control app you can keep tabs on the charging process, too. This is also where you go to activate smart charging<sup>1</sup>, for example, in order to benefit from cheaper night-time electricity tariffs.



<sup>1</sup>In conjunction with standard specification, this service is restricted to the function "Immediate pre-entry climate control".



### Controlling vehicle functions.

You can start pre-entry climate control<sup>1</sup> for your smart here as and when you wish, for example, and get your vehicle fully prepared for your journey before you move off.



### Always up to date.

The Vehicle Status function provides information on the current battery charge level, range and tyre pressure. Warnings and push notifications are provided in case of critical vehicle statuses or difficult weather conditions.

Find out more about the smart EQ control app on our website:

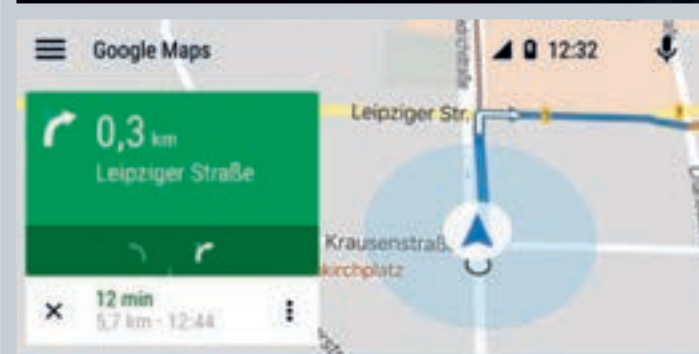




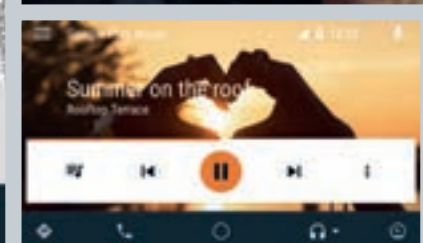
# » A really good connection.

**The perfect connection between your smartphone and your smart:** enjoy more freedom when driving and let your two mobile companions become one. You can conveniently pair the smart Audio-System with your smartphone via Bluetooth® and USB. And you can additionally connect the smart Media-System<sup>1</sup> with the aid of the Android Auto app<sup>2</sup>. Both variants have one thing in common: thanks to the push-to-talk button and intelligent voice command function, you will have everything under control during the journey – above all, your steering wheel.

## Navigation



## Music



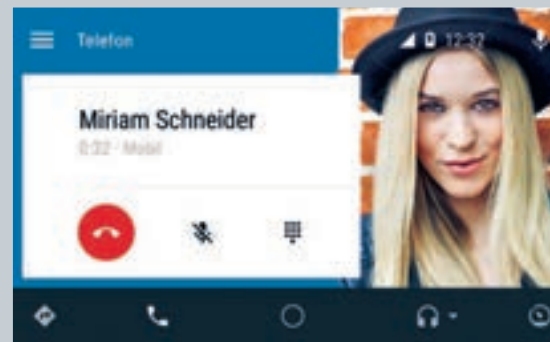
## For Android, for your car, for everything.

Thanks to the Android Auto app, your Android smartphone and the smart Media-System merge to create a single perfect unit. Once connected via USB and Bluetooth® there is nothing to keep you from music, navigation or communication, because the app gives you access to your smartphone's functions from your smart Media-System. That is just as straightforward as it sounds, and the interface is easy to use, too. The simplified way of displaying your smartphone apps makes operation using the buttons on the smart Media-System and steering wheel particularly intuitive and safe. The connection via the MirrorLink® app<sup>3</sup>, the solution for operating systems other than Android, works in a similar way and is just as straightforward to use.

## Voice control at the touch of a button – with push to talk:

Once your smartphone is connected with your smart there is not much else to do – but there's plenty you can say: whether Siri, Google Assistant, Cortana or Bixby is your preferred assistant, just pressing the push-to-talk button on the right of your multifunction steering wheel will activate voice control and make your wish their command. During the journey you can navigate to a new destination using Google Maps, send or listen to a text message, request your favourite song from a playlist and do – or ask for – much more.

## Communication





# » Active, passive, innovative.

**The most intelligent way of ensuring safety is** to not let accidents happen in the first place. This is why we have continually evolved the innovative smart safety concept. In addition to proven passive safety features such as the tridion safety cell, crash boxes or safety seats with integral seat belts, the new smart EQ fortwo and forfour also incorporate innovative, active safety systems which are unusual for this category of vehicle. For example Active Brake Assist, which comes as standard<sup>1</sup>: this radar-based safety system monitors the traffic ahead of you and, if necessary, will automatically trigger emergency braking at speeds of 30 km/h or over, before a collision with a vehicle ahead can happen. As a further boon to safety, all the electrical components of the vehicle are securely housed – the high-voltage battery, for example, is particularly well protected within the vehicle floor.



**The service life of the high-voltage battery is also assured:** thanks to the smart battery certificate<sup>2</sup>, the high-voltage battery comes with a warranty for eight years or 100,000 kilometres, whichever comes first.

<sup>1</sup> In conjunction with BRABUS Style only available with front fog lamps or LED & Sensor package.  
<sup>2</sup> Please see the service booklet for precise terms and conditions.





#### High-voltage battery (HV battery).

The positioning of the HV battery within a robust frame set into the vehicle floor gives the best possible protection against deformation in the event of a collision. The battery's low centre of gravity also noticeably improves handling. As well as the high-voltage supply for the electric drive system, there is a separate on-board electrical supply of the conventional type with a 12 V automotive battery. All connectors in the high-voltage system are touch-safe and are monitored by the system's own 12 V interlock circuit. This ensures that the occupants do not at any time come into contact with high voltage. And should it ever actually come to a crash, the high-voltage elements switch themselves off according to the severity of the accident.



#### Tridion safety cell.

This key element of the innovative smart safety system is not only responsible for the typical smart two-colour look – it also assumes the main role in occupant protection. Just like a nut is protected by its hard shell, the tridion safety cell in 75% high-strength steel keeps its contents safe from harm. In conjunction with further components such as crash boxes and deformation elements, it ensures maximum safety in a minimum of space.



#### Active Brake Assist<sup>1</sup>.

At speeds of 30 km/h or over, the standard-specification Active Brake Assist system emits a warning signal to alert the driver to the fact that its radar technology has identified the risk of collision with a vehicle on the road ahead. Should the driver fail to brake or initiate evasive manoeuvres despite the warning, gentle braking is initiated autonomously. If the driver responds by braking, they are assisted in the emergency braking. Active Brake Assist can thereby help to prevent accidents with vehicles ahead or mitigate the consequences of a potential accident.



#### Airbags.

With seven airbags as standard: as well as airbags for the driver and front passenger, all smart electric models come with a kneebag for the driver, two pelvis/thorax bags in the backrests of the driver's and front passenger seats and window airbags, which deploy over the windows on the side of the vehicle affected by an impact.

<sup>1</sup>In conjunction with BRABUS Style only available with front fog lamps or LED & Sensor package.



#### Lane Keeping Assist.

Optional Lane Keeping Assist uses a camera to monitor the road ahead of you and gives an audible signal as well as a visual signal in the instrument cluster at speeds over 70 km/h to warn you if you leave your lane.



#### Crosswind Assist.

Particularly when driving out of town or on the motorway, sudden gusts of wind can affect the handling of the vehicle. Crosswind Assist, a standard feature, detects deviations from straight-line stability and specifically brakes individual wheels so that you do not have to countersteer as strongly.



# »» Electric power is tasty, too.



## Your new electric smart – tailored to your needs.

The future looks good: only smart offers quite such a radical approach to the individualisation of your fully electric car even in the standard specification. With a range of different equipment packages and the full spectrum of smart colours and wheels on offer, it's time to bring some new momentum to the city, not just new energy .



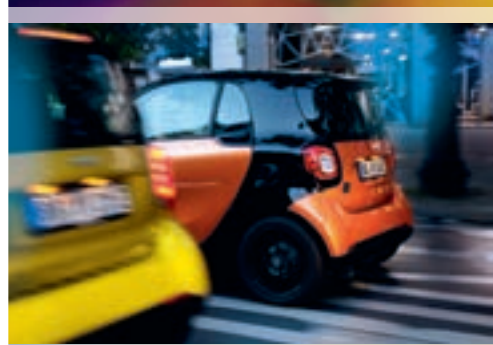
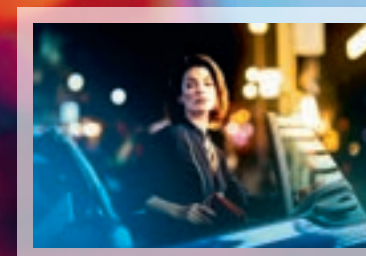
All models, the full equipment range.





# » As colourful as life in the city.

There are just so many possibilities when it comes to designing the electric car of your dreams. With many electric vehicles the fun stops when it comes to the colour choice, but with the smart that's where it begins: after all, with a smart you always have the option of combining two colours. And there's certainly plenty of choice – which is why you rarely see two models the same. Typically smart: more versatile, more individual, more varied. Just like the smart's natural habitat.





# >> Standard equipment

**Standard yes, but never ordinary:** even the standard version of the smart EQ fortwo has plenty of extras on offer – such as the Cool & Audio package. Thanks to the air conditioning system you can keep a cool head even on warm days, while cool sound comes courtesy of the smart Audio-System, which features an AUX/USB connection and Bluetooth® interface including hands-free system. Other highlights include the centre console with drawer or the shift lever knob in leather.

**Comfort and safety assured.** All electric smart models come with a comprehensive array of comfort-related and safety features:

- > Cool & Audio package
- > Active Brake Assist
- > Crosswind Assist
- > 5 airbags
- > Electric power steering
- > Charging cable incl. charging cable bag. Choice of charging cable for public charging stations and wallbox or for domestic power socket



- Interior**
- > 3-spoke steering wheel
  - > Shift lever knob in leather (black)
  - > Centre console with drawer and double cup holder at front, cup holder at rear
  - > Electric windows
  - > Interior lighting
  - > Passenger seat with through-loading function



- Exterior**
- > tridion safety cell in black
  - > bodypanels/body in solid colour black, white or red
  - > H4 halogen headlamps with integrated LED daytime driving lights



- Special features of the fortwo**
- > Solid roof with fabric covering in black
  - > Spectacles/sunglasses compartment for driver and passenger

- Special features of the cabrio**
- > Electric tritop fabric soft top in black, with heated glass rear window and roof liner in grey
  - > Removable roof bars in the tridion colour
  - > Stowage compartment for roof bars in tailgate

- Special features of the forfour**
- > Solid roof in the tridion colour
  - > 85° rear doors
  - > Twin electric windows with convenience control and obstruction sensor
  - > Luggage compartment lighting





# >> passion.

**A confident, extravagant, modern style:** the passion equipment line makes even this exceptional form of mobility a little bit more special.

- > There are three stunning colour variants for the interior, encompassing the dashboard, seats and door centre panels: high-contrast black/orange, classic black/white, elegant black/black
- > tridion safety cell in black
- > 38.1 cm (15-inch) 8-spoke alloy wheels, painted in silver



## **black/orange:**

A high-contrast interior with seat surfaces, dashboard and door centre panels in orange fabric, outer seat cushion areas in black fabric, orange topstitching and accent trim parts in black/grey.



## **black/white:**

Dashboard, door centre panels and outer seat cushion areas in black fabric, with seat surfaces, accent trim parts and topstitching in gleaming white.



## **black/black:**

The tasteful interior comprising dashboard, door centre panels and seats in black fabric, visually refined by accent trim parts in black/grey.



# >> perfect.

**Sporty and elegant.** The perfect equipment line stands out with plenty of style and a harmonious colour combination in black, brown and grey.

- > Seats with upholstery in leather look/fabric black/brown with brown topstitching
- > Dashboard and door centre panels in brown fabric, accent trim parts in black with a high-gloss finish, air vents in grey
- > Map pocket on driver and front passenger seatbacks (forfour)
- > tridion safety cell in black
- > 38.1 cm (15-inch) 4-spoke alloy wheels painted in black and with a high-sheen finish



Multifunction steering wheel in leather and dashboard in brown fabric with accent trim parts in black and air vents in grey.



Seats with leather-look/fabric upholstery in the colour combination black/brown – the forfour looks just as stylish in the rear as in the front.



The pictures on this double page show options in some cases.



# >> prime.

**Stylish, timeless.** High-quality appointments coupled with elegant colours and subtle contrasts – that's just one way of summing up the prime equipment line.

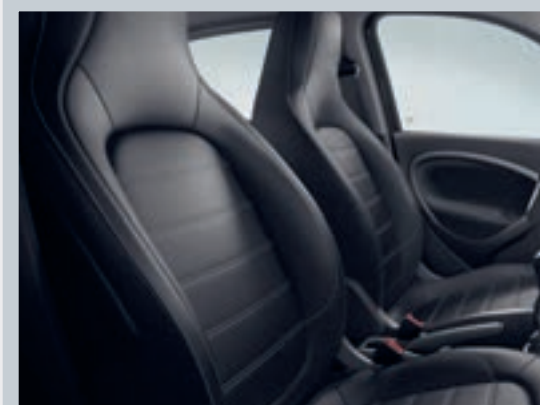
- > Seats with upholstery in black leather with grey topstitching
- > Heated seats for driver and front passenger
- > Dashboard and door centre panels in black fabric and accent trim parts in black/grey
- > Map pocket on driver and front passenger seatbacks
- > tridion safety cell in black
- > 38.1 cm (15-inch) 5-twin-spoke alloy wheels painted in black and featuring a high-sheen finish
- > Universal pre-installation for smart accessories on the backrests of the front seats<sup>1</sup>



The pictures on this double page show options in some cases.



<sup>1</sup>Only in conjunction with smart EQ forfour.



Upholstery in black leather and topstitching in grey. In the case of the forfour in the back as well as in the front of the car.



Multifunction steering wheel in leather, dashboard and door centre panels in black fabric with accent trim parts in black/grey.



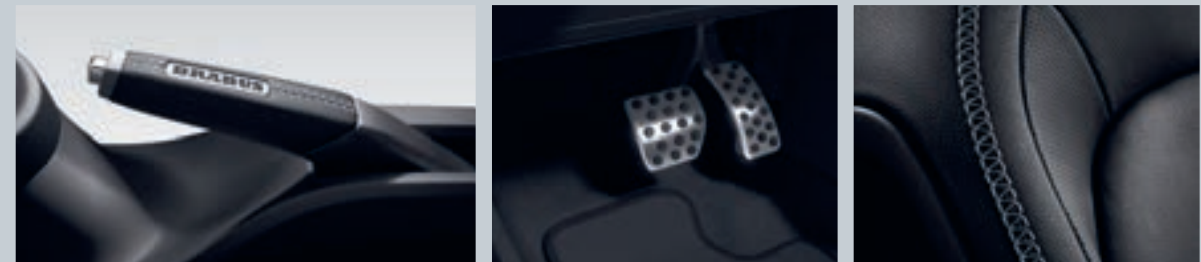


# >> BRABUS Style.

**Sporty and exclusive.** It takes good ideas and courage to lead the way. And in a sporty car it's a little more fun – especially when the interior offers as much comfort as our BRABUS Style equipment line<sup>1</sup>.

**Exterior**

- > 40.6 cm/43.2 cm (16-/17-inch) BRABUS Monoblock IX alloy wheels painted in matt grey, with 185/50 R 16 front tyres and 205/40 R 17 rear tyres (R89)
  - > 40.6 cm/43.2 cm (16-/17-inch) BRABUS Monoblock IX alloy wheels in grey, high-sheen with a matt painted finish, with 185/50 R 16 front tyres and 205/40 R 17 rear tyres (R80)<sup>2</sup>
- > BRABUS rear apron in the body colour with rear diffuser in matt grey
  - > BRABUS front spoiler in the body colour



**Interior**

- > BRABUS dashboard in black leather look/fabric
  - > BRABUS 3-spoke multifunction sports steering wheel in nappa leather with steering wheel bezel in anthracite and specific topstitching in grey
  - > BRABUS sports seats with upholstery in perforated nappa leather/black leather with specific topstitching in grey
- > BRABUS shift lever knob in leather
  - > BRABUS hand-brake lever in leather
  - > Brushed stainless steel sports pedal covers with rubber studs
  - > Panoramic roof<sup>3</sup>

<sup>1</sup>Only available in conjunction with front fog lamps or LED & Sensor package. <sup>2</sup>Optionally available. <sup>3</sup>Not available for smart EQ fortwo cabrio.



The pictures on this double page show options in some cases.



# »» edition nightsky.

**A special model that makes it clear just how dynamic this new form of driving can be:** the smart EQ fortwo, fortwo cabrio or forfour in the edition nightsky. The colour combination of black and pacific blue immediately catches the eye. Together with aerodynamic and styling elements from BRABUS, this adds up to deliver a car that boasts a special sporty look all of its own and is ahead of the mainstream and the zeitgeist in every detail – from its front spoiler to its rear diffuser. For the wheels in particular, everything revolves around design: the 40.6 cm (16-inch) BRABUS Monoblock VIII alloy wheels are painted in black and finished with a rim strip in blue. Another highlight – in the truest sense of the word – is the LED & Sensor package.

## Interior.

The interior of the edition nightsky stands out with its distinctive accent trim parts in pacific blue. Various BRABUS details such as the selector lever with smart EQ fortwo or forfour logo, the aluminium handbrake<sup>1</sup>, the brushed stainless steel pedals and the door sills with BRABUS lettering give this edition a particularly high-quality appeal. The dashboard and door centre panels are elegantly upholstered in fabric. Adding a touch of practicality is the stowage space package, thanks to which you can put your belongings away quickly, safely and tidily in the glove compartment, stowage net or on the passenger seat. Talking of seats, you have a choice here between the black fabric seats of the passion equipment line and – as an option – the black leather seats with grey topstitching from the prime equipment line.

<sup>1</sup>Not available for smart EQ forfour.





# »» Energy made to measure.



**No car could be more special than this:** a smart, electric-powered, designed by you – from the exterior colours to the topstitching, from the colour of the rim rings to the leather or the soft top on the cabrio. The smart BRABUS tailor made programme for the smart fortwo and the smart EQ fortwo and smart EQ fortwo cabrio allows you to specify what modern mobility looks like. After all, who says that being eco-friendly always has to mean green? Sometimes alubeam metallic is a good idea, too. Or wave blue. Or berry red. Or whatever your favourite colour might be. With smart BRABUS tailor made you have access to the personalisation options for your dream electric car which you have looked for in vain elsewhere. At least that is one less decision to make.

Use our visualiser  
to design your own dream car:





# » Tyres & wheels.



**38.1 cm (15-inch) 4-spoke alloy wheels (R32)** painted in black and featuring a high-sheen finish, with 165/65 R 15 front tyres and 185/60 R 15 rear tyres



**40.6 cm (16-inch) BRABUS Monoblock VIII alloy wheels (R84)** in silver with a high-sheen finish, with 185/50 R 16 front tyres and 205/45 R 16 rear tyres<sup>1,2</sup>



**40.6 cm (16-inch) BRABUS Monoblock VIII alloy wheels (R97)** in anthracite, high-sheen, matt finish, with 185/50 R 16 front tyres and 205/45 R 16 rear tyres<sup>1,2</sup>



**38.1 cm (15-inch) 8-spoke alloy wheels (R88)** painted in silver, with 165/65 R 15 front tyres and 185/60 R 15 rear tyres



**40.6 cm (16-inch) front and 43.2 cm (17-inch) rear BRABUS Monoblock IX alloy wheels (R89)**<sup>3,4</sup> painted in matt grey, with 185/50 R 16 front tyres and 205/40 R 17 rear tyres



**38.1 cm (15-inch) 5-twin-spoke alloy wheels (R87)** painted in black and featuring a high-sheen finish, with 165/65 R 15 front tyres and 185/60 R 15 rear tyres



**40.6 cm (16-inch) front and 43.2 cm (17-inch) rear BRABUS Monoblock IX alloy wheels (R80)**<sup>3,5</sup> painted in matt grey, high-sheen finish, with 185/50 R 16 front tyres and 205/40 R 17 rear tyres



**40.6 cm (16-inch) 8-Y-spoke alloy wheels (R95)** painted in black, with 185/50 R 16 front tyres and 205/45 R 16 rear tyres<sup>1</sup>



**40.6 cm (16-inch) 5-twin-spoke alloy wheels (R91)** painted in black and featuring a high-sheen finish, with 185/50 R 16 front tyres and 205/45 R 16 rear tyres<sup>1</sup>

**The choice of alloy wheels** for the new electric models ranges from elegant to dynamic. All of them come with tyres that feature low rolling resistance, so ensuring optimal efficiency in conjunction with any of the looks.



**Low rolling-resistance tyres:** the car is fitted with 38.1 cm (15-inch) summer tyres with low rolling resistance - lower rolling resistance means lower fuel consumption, thereby extending the car's range.

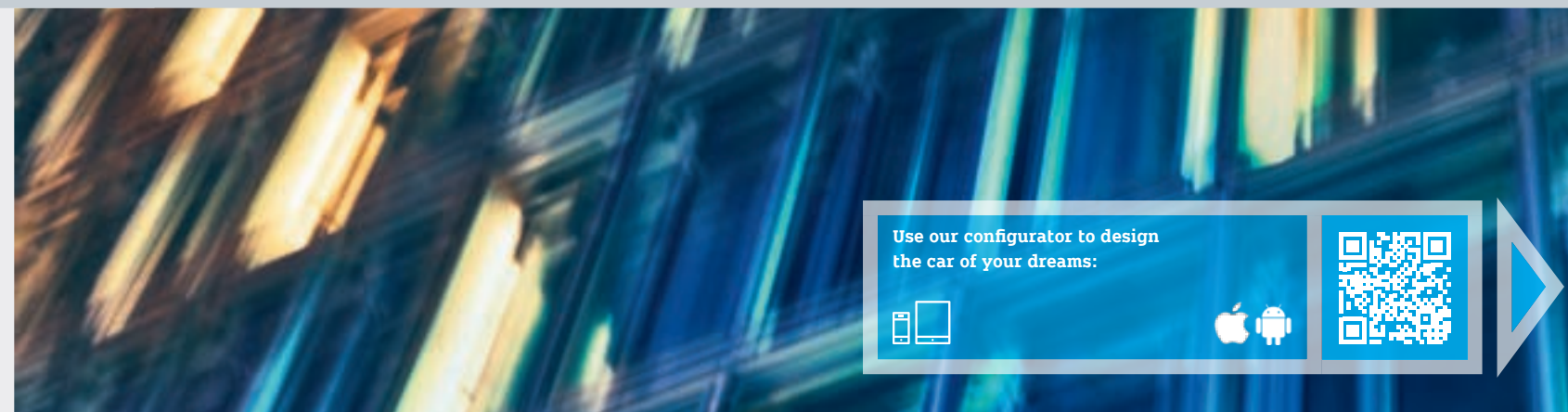
<sup>1</sup>Only in conjunction with Urban Style package or Sleek Style package. <sup>2</sup>Available for fortwo only. <sup>3</sup>Only in conjunction with BRABUS Style. <sup>4</sup>Available for forfour as 43.2 cm (17-inch) alloy wheels (R90) with 185/45 R 17 front tyres and 205/40 R 17 rear tyres. <sup>5</sup>Available for forfour as 43.2 cm (17-inch) alloy wheels (R81) with 185/45 R 17 front tyres and 205/40 R 17 rear tyres.



# »» Design the future.

## The simple way to configure your new electric smart.

**Don't just start a trend** – climb aboard and drive it across town. With the smart configurator, it's really easy to put together the electric model of your dreams: just a few clicks of the mouse are all it takes to look at and combine the various equipment packages and features, with immediate feedback on the feasibility of building your car, and its price.



Use our configurator to design the car of your dreams:







# >> Technical data.

Engine/type
Continuous output in kW <sup>1</sup>
Max. output in kW <sup>1</sup>
Max. torque in Nm <sup>1</sup>
Acceleration 0–60 km/h in s
Acceleration 0–100 km/h in s
Max. speed in km/h
Battery capacity in kWh
Battery type
Number of battery cells
On-board charger in kW
Charging time 10–80% in hours <sup>4</sup> when charged at a wallbox <sup>5</sup> or public charging station (mode 3)
Charging time 10–80% in hours <sup>4</sup> when charged at a domestic power outlet (mode 2)
Range in km <sup>6, 7</sup> when charged at a wallbox <sup>5</sup> or public charging station (mode 3)
Range in km <sup>6, 7</sup> when charged at a domestic power outlet (mode 2)
Electricity consumption (weighted) in kWh/100 km <sup>6, 7</sup> when charged at a wallbox <sup>5</sup> or public charging station (mode 3)
Electricity consumption (weighted) in kWh/100 km <sup>6, 7</sup> when charged at a domestic power outlet (mode 2)
CO <sub>2</sub> emissions (combined) in g/km <sup>6, 7</sup>
Efficiency class (applies to Germany) <sup>7</sup>
Vehicle length/width/height in mm
Wheelbase in mm
Track width (front/rear) in mm
Turning circle in m (kerb-to-kerb)
Luggage compartment capacity in l <sup>8</sup>
Kerb weight/payload in kg <sup>9</sup>

The smart EQ fortwo  
60 kW (82 hp)



Separately excited three-phase synchronous motor
41
60
160
4.9
11.5
130
17.6
Lithium-ion
96
4.6 (22) <sup>2, 3</sup>
< 3.5 (<40 min)
< 6 (8.5)
145–160 (145–160)
145–160 (145–160)
15.7–13.9 (14.5–12.9)
15.7–13.9 (20.1–18.0)
0 (0)
A+ (A+)
2695/1663/1555
1873
1469/1430
6.95
260–350
1085/225

<sup>1</sup>The figures in brackets relate to the 22 kW on-board charger.

smart EQ fortwo cabrio  
60 kW (82 hp)



Separately excited three-phase synchronous motor
41
60
160
5.1
11.8
130
17.6
Lithium-ion
96
4.6 (22) <sup>2, 3</sup>
< 3.5 (<40 min)
< 6 (8.5)
145–159 (144–159)
145–159 (144–159)
15.8–13.9 (14.5–13.0)
15.8–13.9 (20.2–18.0)
0 (0)
A+ (A+)
2695/1663/1553
1873
1469/1430
6.95
260–340
1115/205

smart EQ forfour  
60 kW (82 hp)



Separately excited three-phase synchronous motor
41
60
160
5.5
12.7
130
17.6
Lithium-ion
96
4.6 (22) <sup>2, 3</sup>
< 3.5 (<40 min)
< 6 (8.5)
139–154 (137–155)
139–154 (137–155)
16.4–14.5 (15.0–13.4)
16.4–14.5 (20.8–18.6)
0 (0)
A+ (A+)
3495/1665/1554
2494
1467/1429
9.05
185–975
1200/360

<sup>1</sup>In accordance with directive ECE R85 in its currently valid version. <sup>2</sup>22 kW on-board charger available as an option. <sup>3</sup>Only in conjunction with digital radio. <sup>4</sup>Depending on the local electricity supply infrastructure and the charging current set on the charging cable. <sup>5</sup>Wallbox optionally available. <sup>6</sup>The figures stated were determined according to the prescribed measuring process, in this case the "NEDC CO<sub>2</sub> figures" pursuant to Art. 2, no. 1 of Implementing Regulation (EU) 2017/1153. The fuel consumption figures were calculated on the basis of these figures. The figures will vary according to the optional features selected. The fuel consumption was determined on the basis of Regulation 692/2008/EC. <sup>7</sup>In accordance with the German fuel efficiency labelling ordinance for passenger cars (PKW-EnVKV), Section 3a. The data do not relate to an individual vehicle and do not form part of an offer, but are intended solely for the purpose of comparison between the different types of vehicle. <sup>8</sup>Up to roof in accordance with standard DIN 70020-1. <sup>9</sup>Figures in accordance with Directive 92/21/EEC in the version 95/48/EEC (mass in running order, with driver, 68 kg, and luggage, 7 kg) for vehicles with standard equipment. Optional equipment and accessories generally increase this figure, with a corresponding impact on payload.



## smart infocenter

(Call free from a landline. Charges for calls from mobile networks may vary.)

**00800 2 77 77 77 7**

## >> smart service contracts.

All the fun of driving, without additional workshop costs. Your smart service partner will be pleased to advise you.

You can contact us online –  
we'll get right back to you:



We will be pleased to take back your smart for environmentally friendly disposal in accordance with the European Union\* (EU) Directive on End-of-Life Vehicles – but that day lies a long way off (\*does not apply to Switzerland). To make it as easy as possible for you to return the vehicle, a network of companies exists which will take back your old car and dismantle and recycle it. You can return your vehicle to one of these companies free of charge. In so doing, you will be making a valuable contribution to closing the recycling loop and to saving resources. Further information on recycling end-of-life vehicles and the conditions of return is available at [www.smart.com](http://www.smart.com).

Please note: changes may have been made to the product since going to press (16.08.2018). The manufacturer reserves the right to make changes to the design, form, colour and specification during the delivery period, provided these changes, while taking into account the interests of the vendor, can be deemed reasonable with respect to the purchaser. Where the vendor or the manufacturer uses symbols or numbers to describe an order or the subject of an order, no rights may be derived solely from these. The illustrations may show accessories and items of optional equipment which are not part of standard specification. Colours may differ slightly from those shown in the brochure, owing to the limitations of the printing process. This publication may contain variants and services which are not available in individual countries. Information given regarding statutory regulations, legal requirements and taxation and the consequences thereof applies to the Federal Republic of Germany only and is correct at the time of going to press. Please consult your smart dealer for final details.

**[www.smart.com](http://www.smart.com)**

**smart – a Daimler brand**

Daimler AG, smart/MM, H336, Mercedesstr. 137, 70327 Stuttgart · 7129 · MC EQ453 18 · 02-00/1018